

Echo anomalous band LA

October 20, 2009

Joe M. Moody, Jr, MD

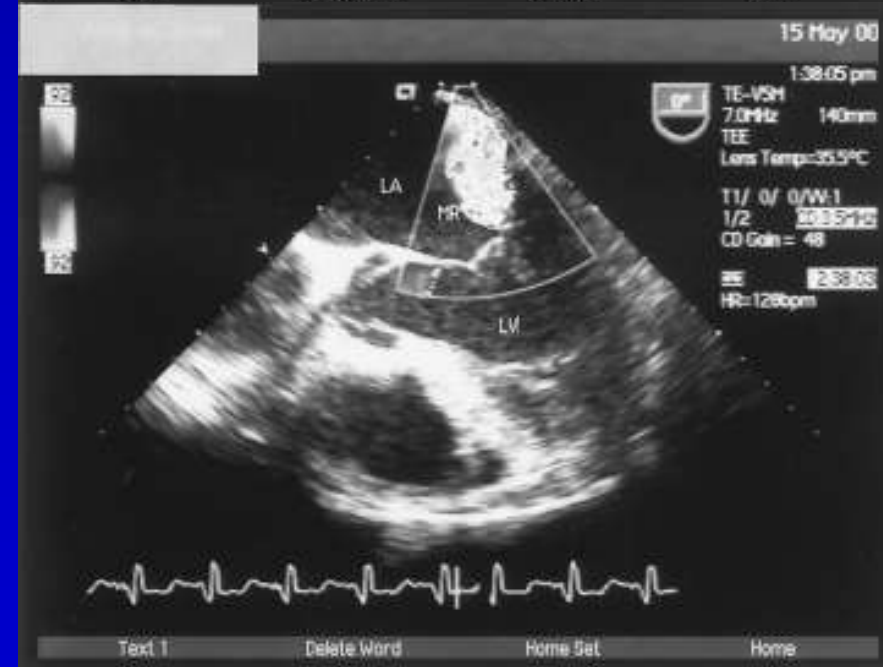
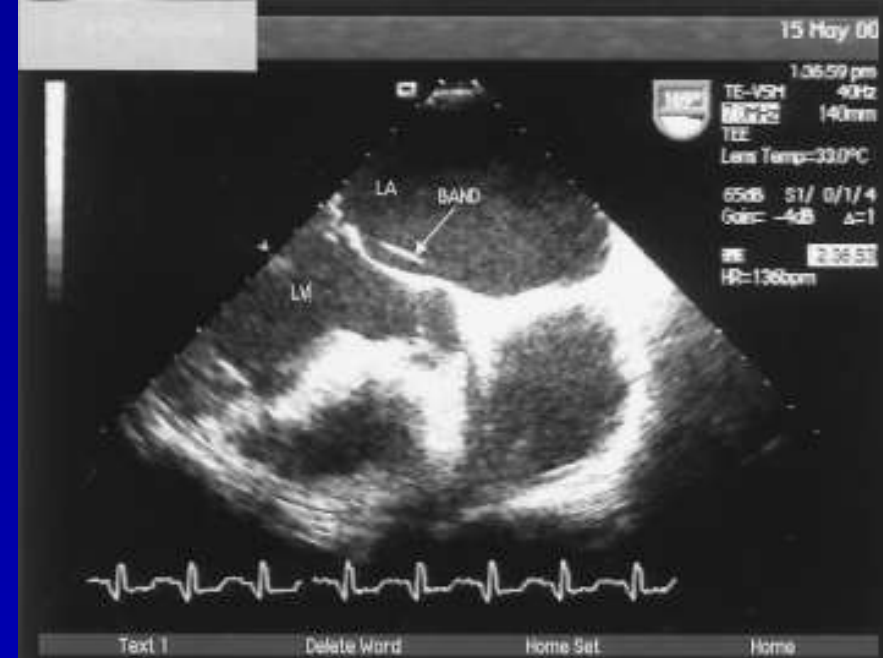
UTHSCSA and STVAHCS

LA Anomalous Band Causing MR

43 yo woman with dyspnea.

TEE view showing the anomalous band in the LA, connecting the atrial side of the anterior MV leaflet and atrial septum .

TEE view showing the anomalous band in the left atrium, causing prolapse and moderate-to-severe mitral regurgitation.



LA Anomalous Band Causing MR

43 yo woman with dyspnea.

Pathological specimen of the removed band.

TEE view showing improvement in the regurgitation after resection of the band.

